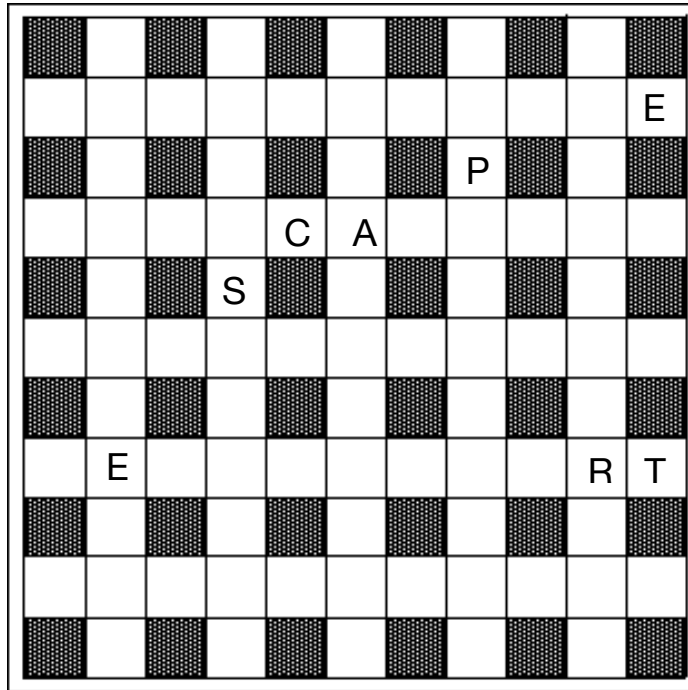


Crisscross Crunch

218

This puzzle suffers a tight squeeze. The answer words read straight across or straight down, but they overlap by one, two, three, or four letters. For example, the answer "battLE" might overlap the answer "LEgs" by two letters and be entered as "BATTLEGS." The clues for Across and Down are in **alphabetical order** according to answers, and the word lengths are in parentheses. We've placed some letters to get you started.



ACROSS

- Sleep disorder (5)
- Fit in, as with a group (6)
- With little effort (6)
- Teach (7)
- Miss Doolittle (5)
- Enter (2, 2)
- Center city inn (5)
- Creep ahead (4)
- Upend (6)
- That's a negative, Werner (4)
- Tubular pasta (5)
- Something easily accomplished (4)
- Lukewarm (5)
- Unite (3)
- Former name of The Congo (5)

DOWN

- All over again (4)
- Make a pigtail (5)
- Support financially (5)
- Bert's pal (5)
- Fictional family of Dallas (6)
- Run a country (6)
- Lazily (4)
- An Alou brother (5)
- Words to the music (6)
- Home of La Scala (5)
- Choices for flower girls (6)
- Thoughtful (7)
- Leave hanging (7)
- Smoke an e-cig (4)
- Heart feeder (4)

February 2025

© All rights reserved ~ unclebobpuzzles.com