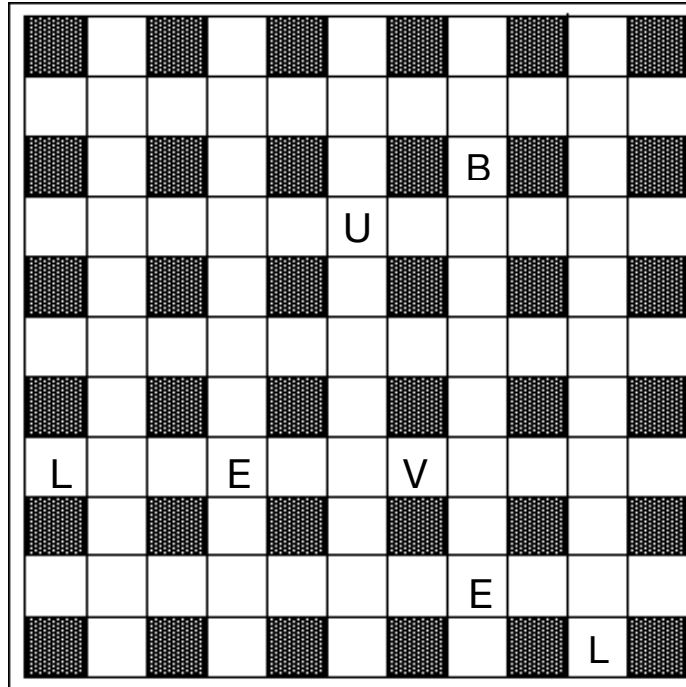


# Crisscross Crunch

# 182

Here we have a puzzle suffering a tight squeeze. The answer words read straight across or straight down, but they overlap by one, two, three, or four letters. For example, the answer "battLE" might overlap the answer "LEgs" by two letters and be entered as "BATTLEGS." To help you solve, the clues for Across and Down are in **alphabetical order** according to answers, and the word lengths are in parentheses. Answer as many clues as you can, and then try to fit them in the grid. We've placed letters to get you started.



## ACROSS

- Breakfast rasher (5)
- Heavens to her! (5)
- Evergreen (7)
- Make higher (7)
- Wild, as an animal (5)
- Macho type (5)
- Primate of Madagascar (5)
- Falsely dis, in print (5)
- Farmland spread (6)
- Necessary (6)
- Race with baton (5)
- Auld Lang \_\_\_ (4)
- Top rating, possibly (3)
- Congo river (4)
- Suave and worldly (6)

## DOWN

- Make later (5)
- Receded, as the tide (5)
- Dutch cheese (4)
- Swelling from water retention (5)
- Spore-bearing plants (5)
- Mother of pearl use (5)
- Flight interruption (7)
- Not uneven (5)
- Devil of a match? (7)
- Bull and stag, e.g. (5)
- Skinflint (5)
- Poetry section (5)
- Perplexed (5)
- New Haven School (4)
- Tribe of southern Africa (4)