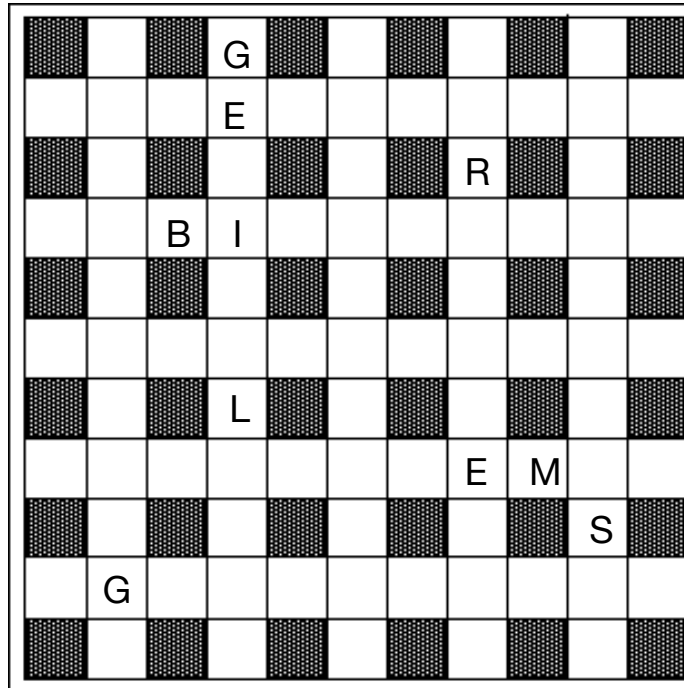


# Crisscross Crunch

# 200

This puzzle suffers a tight squeeze. The answer words read straight across or straight down, but they overlap by one, two, three, or four letters. For example, the answer "battLE" might overlap the answer "LEgs" by two letters and be entered as "BATTLEGS." The clues for Across and Down are in **alphabetical order** according to answers, and the word lengths are in parentheses. We've placed some letters to get you started.



## ACROSS

- Of weak blood (6)
- Insect inflictions (5)
- Mother's nestling place (5)
- Cub Scout unit (3)
- Seal in (6)
- Property you leave behind (6)
- Nun's wear (5)
- Not diluted (4)
- Fairy tale baddie (4)
- Rebel outlaw (8)
- Mouth waterer (6)
- Place for a bum (4)
- Sound of trouble somewhere (5)
- Anybody? (7)
- Wind indicator (4)

## DOWN

- Bunch of home-baked cookies (5)
- Ice cold (5)
- Teen megastar (4)
- Martini garnishes (6)
- Color and fruit (6)
- Singer, actress Dolly (6)
- Leaning Tower townie (5)
- Singer McEntire (4)
- Chief opponent (5)
- Extreme (6)
- Subway hanger (5)
- Theater award (4)
- Bravery (5)
- 3rd piece of a suit (4)
- Dough raiser (5)

August 2023

© All rights reserved ~ unclebobpuzzles.com