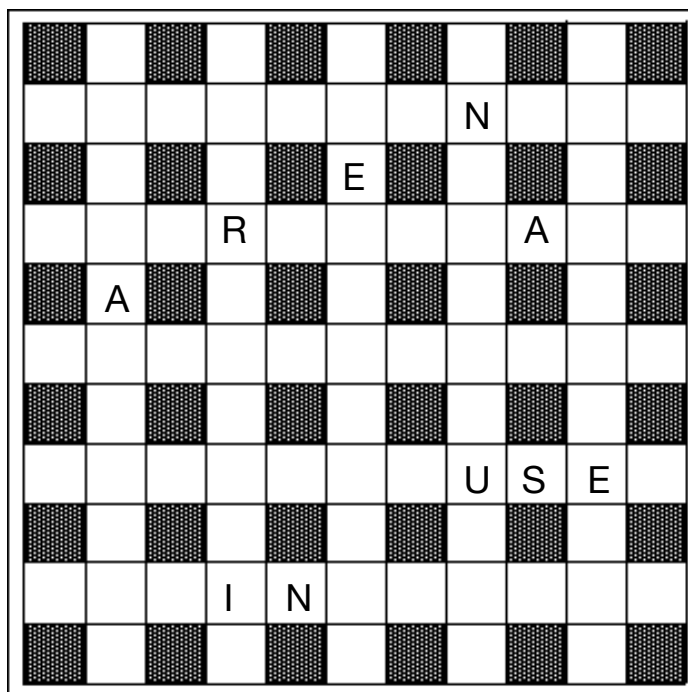


# Crisscross Crunch

# 223

This puzzle suffers a tight squeeze. The answer words read straight across or straight down, but they overlap by one, two, three, or four letters. For example, the answer "battLE" might overlap the answer "LEgs" by two letters and be entered as "BATTLEGS." The clues for Across and Down are in **alphabetical order** according to answers, and the word lengths are in parentheses. We've placed some letters to get you started.



## ACROSS

- Cautionary color (5)
- Baja buddy (5)
- Commence (5)
- Serves a party (6)
- Sunrise driving hazard (5)
- Painter of Maja, with and without (4)
- Machu Picchu people (4)
- \_\_\_ up – made a mess (6)
- Service branch (4)
- \_\_\_ bene (4)
- Not under (4)
- Eye receptor (6)
- Caramel candy (4)
- Temp out of the pool (5)
- Reb opponent (6)

## DOWN

- Culture medium (4)
- Author unknown (9)
- Where the action is (5)
- Yes, on board (3)
- Copy a worthy model (7)
- Tilt-y typefaces (7)
- Aslan land (6)
- Optic is one (5)
- Depose (4)
- Bosc and Anjou (5)
- Pig place (3)
- Fiddler lead (5)
- Prexy backup (4)
- Aye, ashore (3)
- Ambulatory snowman? (4)

July 2025

© All rights reserved ~ unclebobpuzzles.com